

## A-FRAME – 13.3T SWL

### DESCRIPTION

The A-FRAME is designed to lifting equipment's for offshore.

Design load (static): 20 ton static

Design load (dynamic): 13.3 ton SWL (Safety factor > 1.5 \* static load)

Test load 20 ton \* 1.1 = 22.5 ton

The system will be provided with 2 x Hydraulic Power Unit (1x operational & 1x standby).

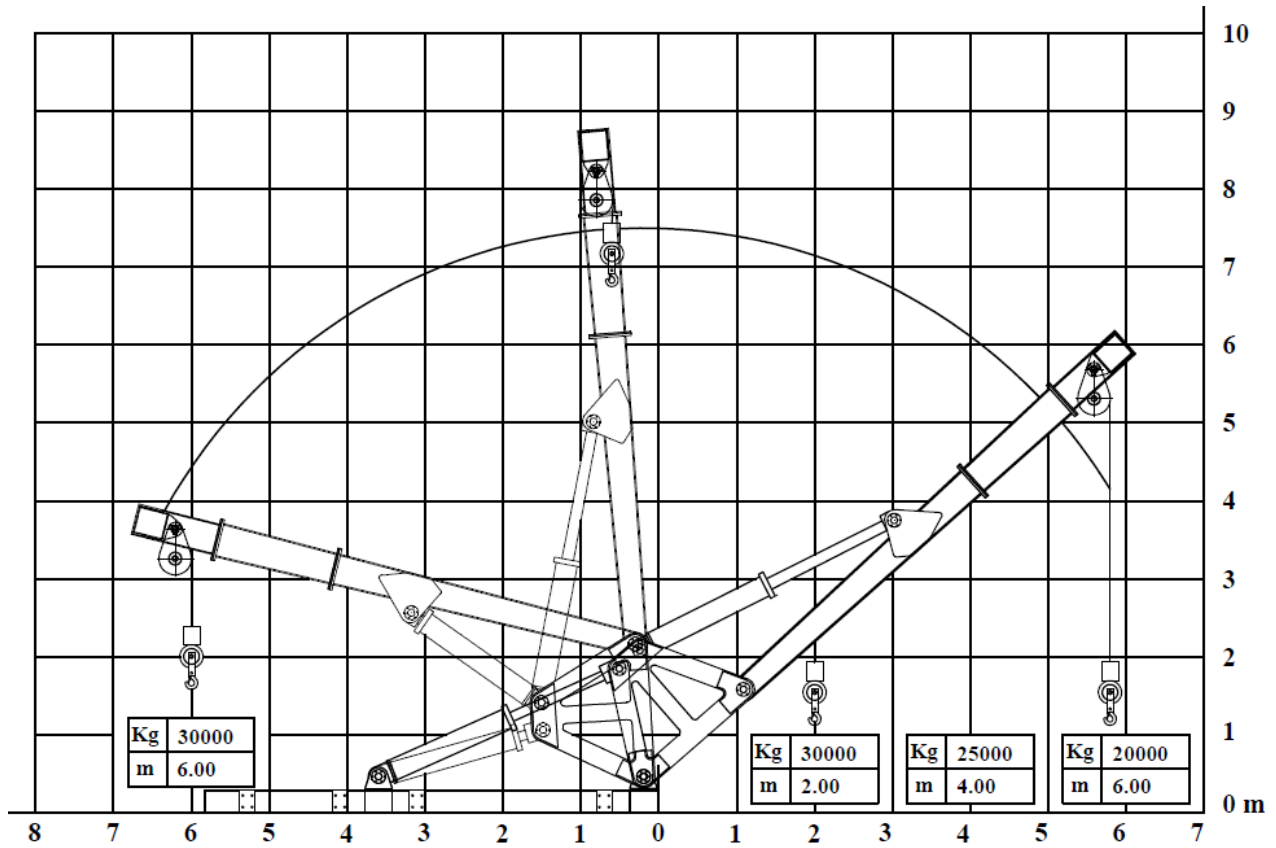
The A Frame skid incorporates a local directional and can be used in conjunction with a Diesel or Electric HPU in either zoned or safe areas.

### OUTLINE SPECIFICATION

<b>13.3T A FRAME</b>	<b>SWL 13.3 Tons</b>
Height of hoisting:	8.0 meter (11m optionally)
Width:	4.2 meters (Optionally expanded to 7.5m max)
Max. Outreach:	4.2 - 5.0 m
Speed:	30-90s
Suitable for operating:	In non-hazardous and hazardous areas
Structure:	Offshore Standard
Overall dimensions:	LWH:5.8x4.8x3.5m
Gross Weight	14 tons
Certificate (function & load test):	Survey report by DNV or equivalent



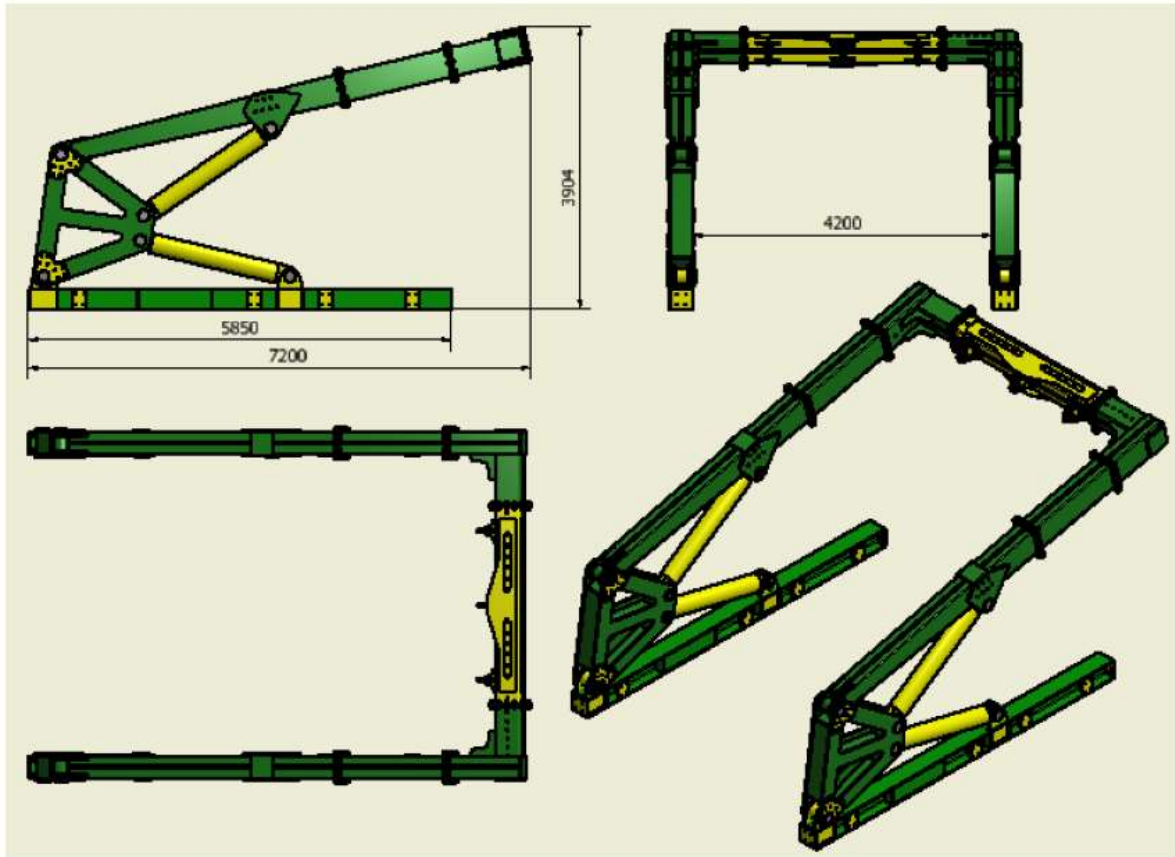
**STATIC WORKING LOAD – DIAGRAM (SWH = 0m)**



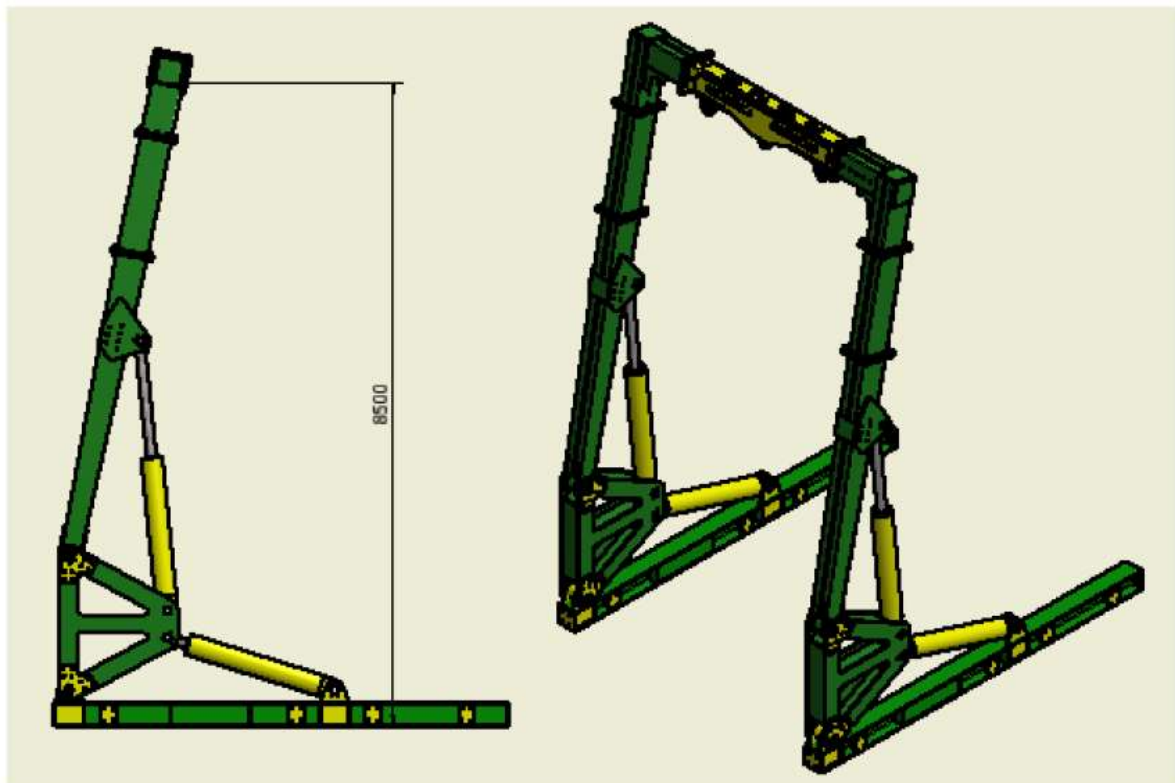
A-FRAME has been built and designed according to DIN 15018 Class H1-B3



### STANDBY POSITION



### WORKING POSITION





## 75 KW HYDRAULIC POWER UNIT

### DESCRIPTION

Electric HPU is designed to provide power to a range of hydraulically controlled equipment. The HPU is fitted with a closed loop piston pump, and an inline hydraulic oil cooler, which requires an external water supply.

The A-FRAME will be supplied with 2 HPU's, 1 for operation and 1 as stand by.

### OUTLINE SPECIFICATION

HYDRAULIC POWER UNIT	
Fuel Tank Capacity:	650 liter
Motor Power:	75 kw/ 380V/50Hz
System Rated Pressure:	28 MPa
System Rated Flow	200 liter/ min
Overall Dimensions:	210x121x288 cm
Gross Weight:	4 Tons





<b>20T HYDRAULIC WINCH</b>	
Line Pull SWL - First Layer Pull	30 Tons
- Top layer at 300 meters wire rope 38mm:	20 Tons
- Top Layer Pull	20 Tons
Hold capacity:	30 Tons (top layer)
Maximum wire capacity:	400 meters of 38mm wire rope
Drive	Hydraulic Motor with Planetary gearbox

Speed:	0-20 meter/ min
Suitable for operating:	In no hazardous or hazadous areas
Structure	Offshore Standard
Drive	Hydraulic
Overall Dimensions	LWH:1.45x1.16x1.27m (excluding second base)
Gross Weight	4.0 tons (including wire rope)
Certificate (fuction & load test)	Third- party



*Image of hydraulic winch with HPU's*

